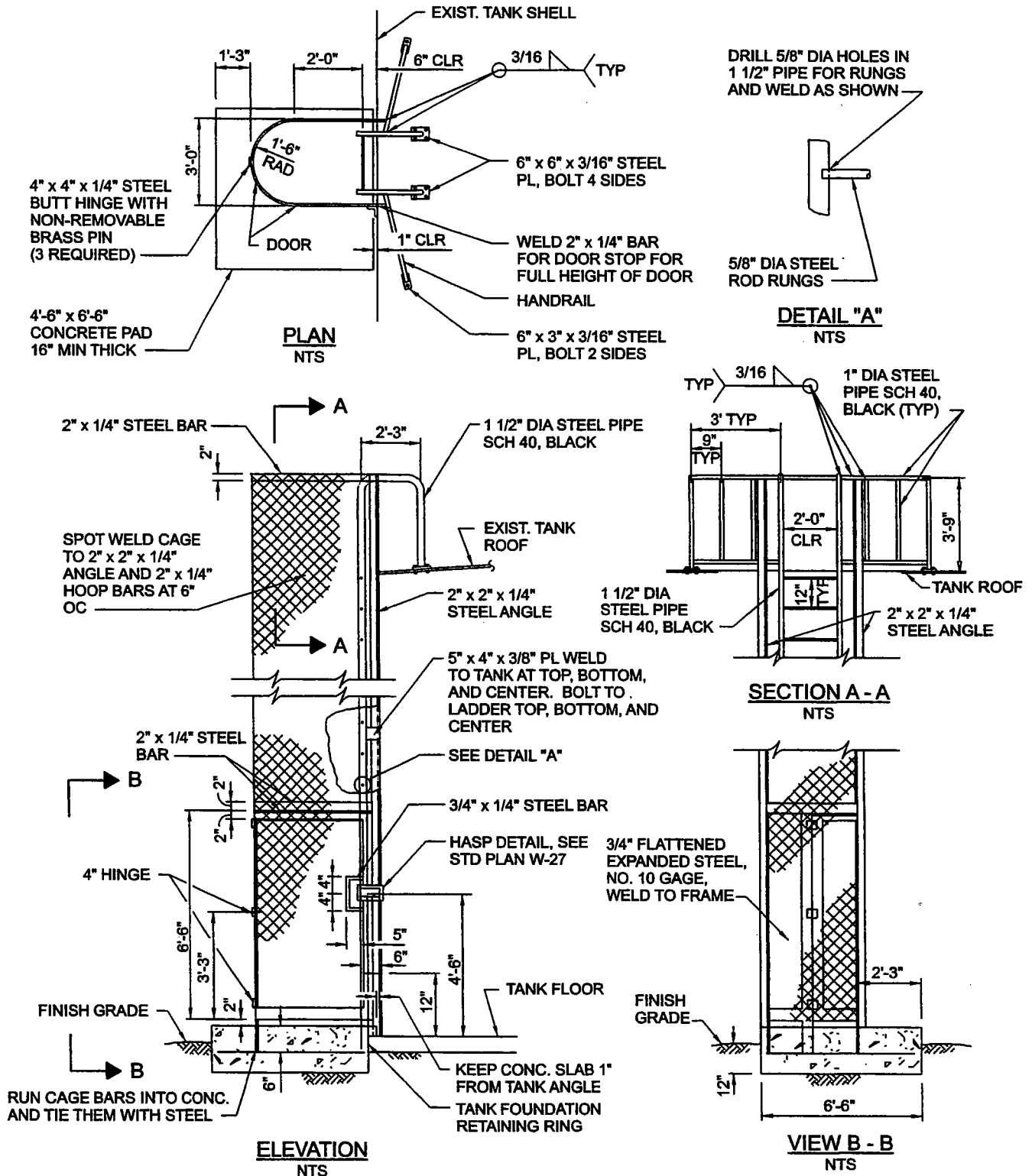


TANK - VERTICAL EXTERIOR LADDER



NOTE: TO BE USED ONLY WHEN TANK HEIGHT IS LESS THAN 15 FEET.

LOS ANGELES COUNTY WATERWORKS DISTRICTS

DEPARTMENT OF PUBLIC WORKS

STANDARD PLAN

W-25

APPROVED

[Signature]
ASSISTANT DEPUTY DIRECTOR

APRIL 2004

DATE

SHEET 1 OF 2

TANK - VERTICAL EXTERIOR LADDER (CONTINUED)

GENERAL NOTES:

1. NO PROJECTIONS, CROSS BARS, OR OTHER POTENTIAL HAND OR TOE HOLDS SHALL BE PERMITTED ON THE EXTERIOR OF THE CAGE. EXTEND EXPANDED METAL CAGE TO TANK SHELL.
2. ALL STEEL MATERIAL TO BE UNCOATED AT TIME OF INSTALLATION.
3. PAINT ALL STEEL SURFACES AFTER INSTALLATION WITH ONE COAT OF PRIMER AND TWO COATS OF PAINT, MATCHING THE PAINT AND COLOR OF THE TANK.
4. THE CAGE SHALL BE ROLLED AT THE SHOP TO FIT THE DIMENSIONS AS SHOWN ON PLAN.
5. IN AREAS OF PEDESTRIAN CONTACT, GRIND SMOOTH ALL SHARP CORNERS AND EDGES.
6. CAGE SHALL BE FABRICATED FROM SINGLE SHEET OF 3/4" FLATTENED EXPANDED STEEL, NO. 10 GAGE.
7. WELD 2" x 1/8" STEEL STRIPS ON BOTH SIDES OF ALL EXPOSED JOINTS OF THE EXPANDED STEEL SHEETS.
8. INSTALL ALL ELECTRICAL CONDUITS INSIDE THE CAGE ALONG THE LADDER, ATTACH WITH BRACKETS WELDED TO TANK.

LOS ANGELES COUNTY WATERWORKS DISTRICTS

DEPARTMENT OF PUBLIC WORKS

STANDARD PLAN

W-25

APPROVED


ASSISTANT DEPUTY DIRECTOR

APRIL 2004

DATE

SHEET 2 OF 2