

# Senate Bill (SB) 1383 for Commercial Edible Food Generators

SB 1383 set the state goal that by **2025**, no less than **20%** of **edible food** currently disposed of is **recovered** for human consumption.

## What is required of food generators?

Donate the maximum amount of edible food that would otherwise be disposed of.

Arrange food recovery through contracts or written agreements with food recovery organizations and/or food recovery services that will collect your excess edible food for recovery.



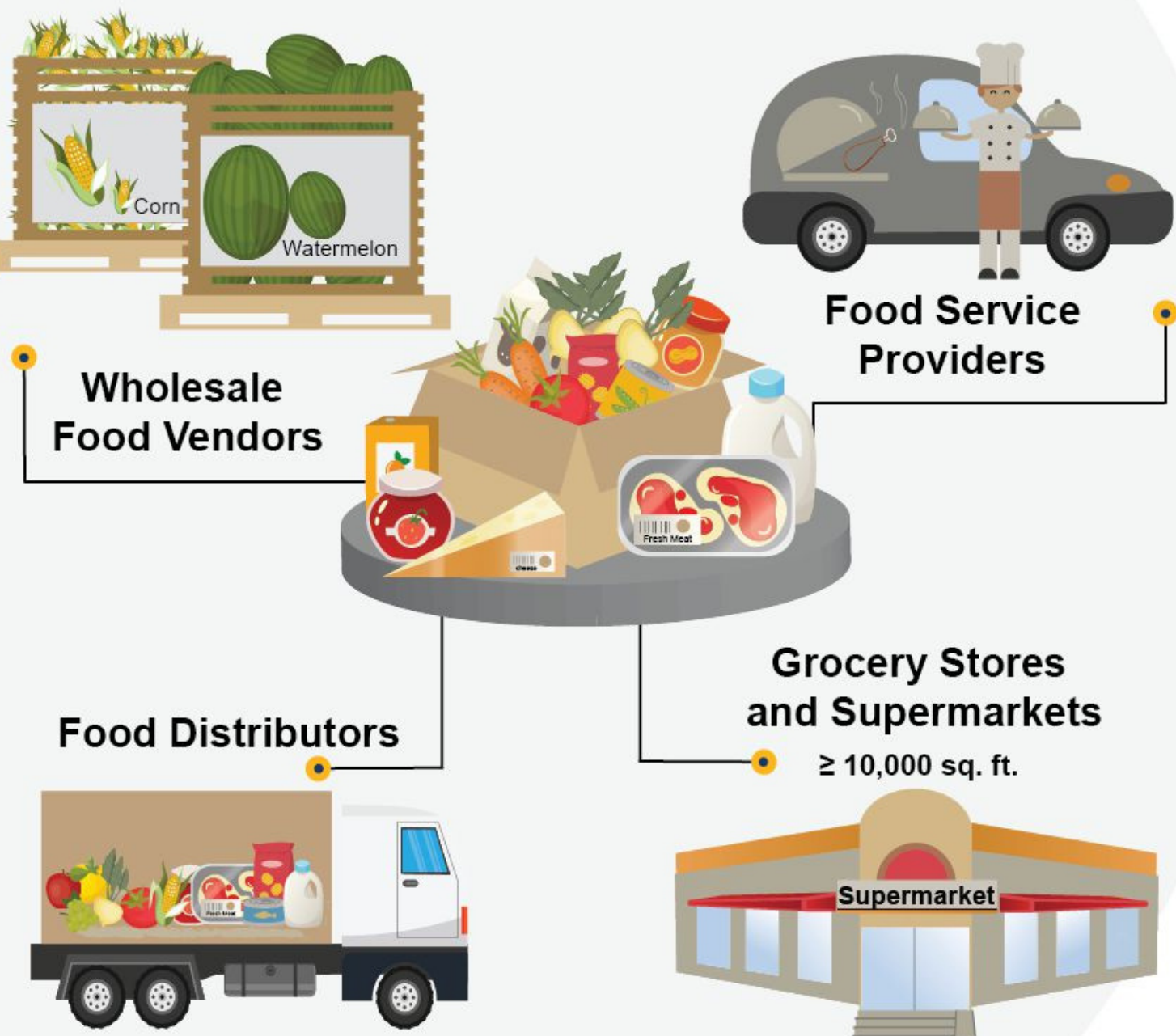
## Why am I being contacted?

Jurisdictions must identify commercial edible food generators (EFGs) and increase their connectivity to food recovery organizations (FROs) and/or food recovery services (FRSs) for the purpose of recovering edible food for food-insecure individuals in our communities. The law has grouped EFGs into two tiers:

### Tier 1

January 1, 2022

Tier one businesses typically have more produce, fresh grocery, and shelf-stable foods to donate.



### Tier 2

January 1, 2024

Tier two businesses typically have more prepared foods to donate, which often require more careful handling to meet food safety requirements (e.g. time and temperature controls).

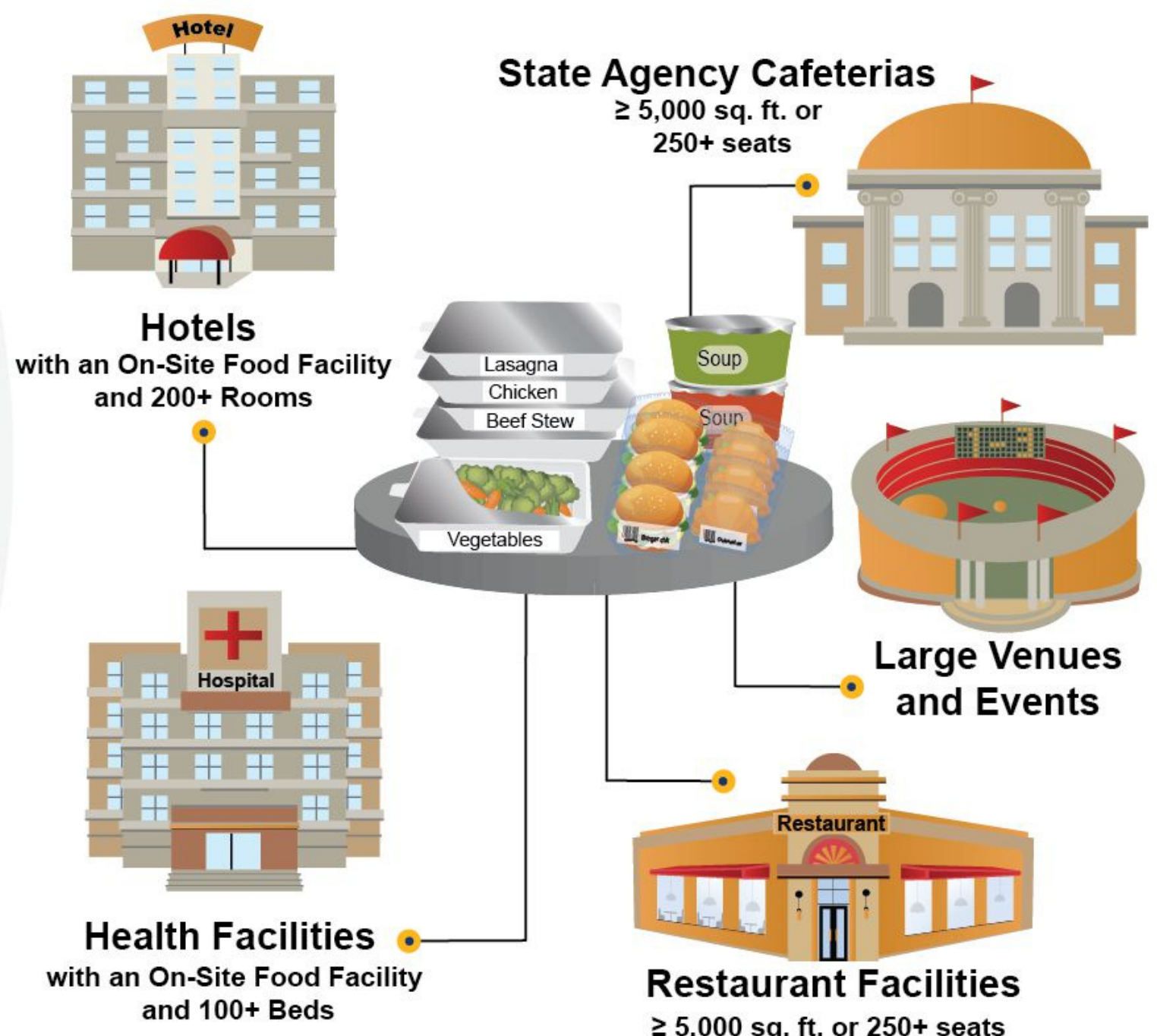
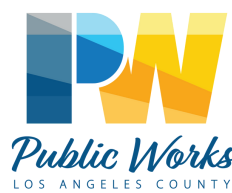


Image by CalRecycle

This is a brief overview of the essentials to know. Visit CalRecycle's SB 1383 website <https://www.calrecycle.ca.gov/organics/slcp/foodrecovery/organizations> OR contact us at [FoodDROPLA@pw.lacounty.gov](mailto:FoodDROPLA@pw.lacounty.gov) for more information.



# Senate Bill (SB) 1383 for Commercial Edible Food Generators Information and Resources

Not sure how to set up a contract or written agreement with a food recovery organization and/or food recovery service? Check out CalRecycle's Model Food Recovery Agreement for help!  
<https://www2.calrecycle.ca.gov/Docs/Web/117921>

## Recordkeeping

The law requires mandated food donors to **maintain records** of their food donation activities. Jurisdictions will monitor compliance by requesting the following types of records during inspections:

- Contract or written agreement with food recovery organizations and/or food recovery services
- Schedules for food donation deliveries or collections
- Quantity of food donated in pounds per month
- Types of food each food recovery organization and/or food recovery service will receive or collect

## Benefits of edible food donations



**Fight food insecurity** – 1 in 4 Californians are now suffering from food insecurity. Partnering with local food recovery organizations and food recovery services will help bring edible food to communities that need it the most and create more climate-resilient communities.



**Greenhouse gas reduction** – Organic material is the largest contributor of methane in landfills. You can reduce harmful greenhouse gases like methane by donating edible food and preventing it from being disposed in landfills.



**Cost reduction** – Donating edible food makes you eligible for tax credits. It can also help you track your supplies and may reduce your waste collection needs, therefore reducing your costs.

## Helpful links:

- **SB 1383 Regulation Text**
  - <https://www.calrecycle.ca.gov/organics/slcp>
- **Safe Surplus Food Donation Toolkit**
  - [https://phasocal.org/wp-content/uploads/2018/02/Safe-Surplus-Food-Donation-Toolkit\\_Version-2\\_Jan-2018.pdf](https://phasocal.org/wp-content/uploads/2018/02/Safe-Surplus-Food-Donation-Toolkit_Version-2_Jan-2018.pdf)
- **Guidelines for Safe Food DonationsAA**
  - <http://www.publichealth.lacounty.gov/eh/docs/lacfri/guidelines-safe-food-donation.pdf>
- **Food Donors Information**
  - <https://www.calrecycle.ca.gov/organics/slcp/foodrecovery/donors>

This is a brief overview of the essentials to know. Visit CalRecycle's SB 1383 website <https://www.calrecycle.ca.gov/organics/slcp/foodrecovery/organizations> OR contact us at [FoodDROPLA@pw.lacounty.gov](mailto:FoodDROPLA@pw.lacounty.gov) for more information.