



COUNTY OF LOS ANGELES

DEPARTMENT OF PUBLIC WORKS

"To Enrich Lives Through Effective and Caring Service"

DEAN D. EFSTATHIOU, Acting Director

900 SOUTH FREMONT AVENUE
ALHAMBRA, CALIFORNIA 91803-1331
Telephone: (626) 458-5100
www.ladpw.org

ADDRESS ALL CORRESPONDENCE TO:
P.O. BOX 1460
ALHAMBRA, CALIFORNIA 91802-1460

October 27, 2008

IN REPLY PLEASE
REFER TO FILE: **SM-1**

Mr. Michael J. Mischel, Director of Public Works
City of Palmdale
38250 Sierra Highway
Palmdale, CA 93550

Attention Mr. David Wu

Dear Mr. Mischel:

CONSOLIDATED SEWER MAINTENANCE DISTRICT CONDITION ASSESSMENT PROGRAM REPORT PROJECT Y0TV0708A

This letter is to inform you that as part of the Sewer Condition Assessment Program, the County of Los Angeles Department of Public Works Consolidated Sewer Maintenance District has completed the closed-circuit television (CCTV) inspection of 18,330 feet or approximately 1.0 percent of the City of Palmdale's sewer system.

The enclosed report outlines the structural and maintenance ratings of your sewer system based on the Pipeline Assessment and Certification Program's rating methodology. Of the sewer lines inspected during this project, there were no segments identified with severe structural defects which required immediate attention. Included in the report are the following:

- Condition Assessment Report
- Project Overview Map (Enclosure 1)
- Quick Maintenance Rating Report Priority List and Quick Maintenance Rating Map (Enclosure 2)
- Quick Structural Rating Map (Enclosure 3)
- Sample Inspection Report (Enclosure 4)
- CCTV Sewer Inspection Project Schedule (Enclosure 5)

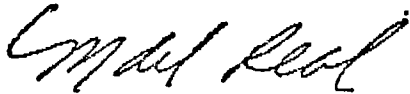
Mr. Michael J. Mischel
October 27, 2008
Page 2

The Condition Assessment Report will provide you with details regarding the maintenance and structural condition of your City's sewer mainlines. This information can be included in your agency's Sewer System Management Plan as a reference in the Chapter 8.0 System Evaluation and Capacity Assurance Plan. The segments with critical maintenance issues have been cleaned and, in some instances, have been incorporated into our routine cleaning schedule for continued monitoring.

If you have any questions regarding this report or the Condition Assessment Program, please contact Mr. Robert Swartz at (626) 300-3367, Monday through Friday, 7 a.m. to 4 p.m., or at rswartz@dpw.lacounty.gov.

Very truly yours,

DEAN D. EFSTATHIOU
Acting Director of Public Works



MANUEL DEL REAL
Assistant Deputy Director
Sewer Maintenance Division

ML:kk
1566

Enc.

bc: Programs Development (Pilker)

bc: MdR, KL, RS, FV, File (Project Y0TV0708A), SPINDLE

**CONDITION ASSESSMENT REPORT
COUNTY OF LOS ANGELES DEPARTMENT OF PUBLIC WORKS
CONSOLIDATED SEWER MAINTENANCE DISTRICT**

PROJECT NAME: Y0TV0708A	PROJECT MGR: Marzena Laskowska
PROJECT DATE: 08/22/07 - 10/12/07	CONTACT NO: (626) 300-3348
SUP. DISTRICT(S): 5	MAP PAGE(S): 1885,1938,1939,1940
Report By: Marzena Laskowska	Report Date: 10/08/08

INTRODUCTION

As part of the Sewer Condition Assessment Program, the County of Los Angeles Department of Public Works Consolidated Sewer Maintenance District has completed the closed-circuit television (CCTV) inspection of 18,330 feet or approximately 1.0 percent of the City of Palmdale’s sewer system.

The Sewer Condition Assessment Program utilizes the Pipeline Assessment and Certification Program (PACP) Quick Rating methodology to rank the structural and maintenance condition of your system based on industry standards.

PROJECT AREA AND DESCRIPTION

Project Y0TV0708A included sewer lines located in both the City of Lancaster and the City of Palmdale. Enclosed for your reference is an overview map of the project area (Enclosure 1).

DEFECT GRADE DESCRIPTION

The Quick Rating indicates the number of occurrences for the highest severity grade for each pipe segment for either maintenance or infrastructure defects. A grade of 1 indicates that a pipe segment is in excellent condition with minor defects, while a grade of 5 indicates that a pipe segment may require immediate attention. A detailed breakdown of the five possible defect grades is as follows:

Grade	Description	Estimate time to Failure
1:	EXCELLENT: Minor Defects.	Unlikely in the foreseeable future
2:	GOOD: Defects that have not begun to deteriorate.	20 years or more
3:	FAIR: Moderate defects that will continue to deteriorate.	10 to 20 years
4:	POOR: Sever defects that will become grade 5 defects within the foreseeable future.	5 to 10 years
5:	IMMEDIATE ATTENTION: Defects requiring immediate attention.	Has failed or will likely fail within the next 5 years

MAINTENANCE REPORT

Our inspection revealed that approximately 98 percent of the system televised was free of blockages or restrictions that would impede sewer flows. However, the remaining 2 percent of the inspected pipe segments within the City of Palmdale area had a PACP maintenance grade of 4 or 5 as indicated in the Quick Maintenance Rating Table shown below. This segment has been incorporated into our routine cleaning schedule with corrective action taken as noted on the Quick Maintenance Rating Report Priority List (Enclosure 2). Also included is a color-coded map showing the quick maintenance rating for each pipe segment.

QUICK MAINTENANCE RATING TABLE

DEFECT GRADE	PIPE LENGTH (FT)	PERCENT TOTAL INSPECTED PIPE LENGTH	NO. SEGMENTS
1: Excellent	15,645	85.4	54
2: Good	935	5.1	3
3: Fair	1,400	7.6	4
4: Poor	0	0	0
5: Immediate Attention	350	1.9	1
TOTAL	18,330	100	62

STRUCTURAL REPORT

Our inspection revealed that 100 percent of the inspected pipe segments within the City of Palmdale were free of severe structural defects as indicated in the Quick Structural Rating Table shown below. A color-coded map showing the Quick Structural Rating for each pipe segment is located in Enclosure 3.

QUICK STRUCTURAL RATING TABLE

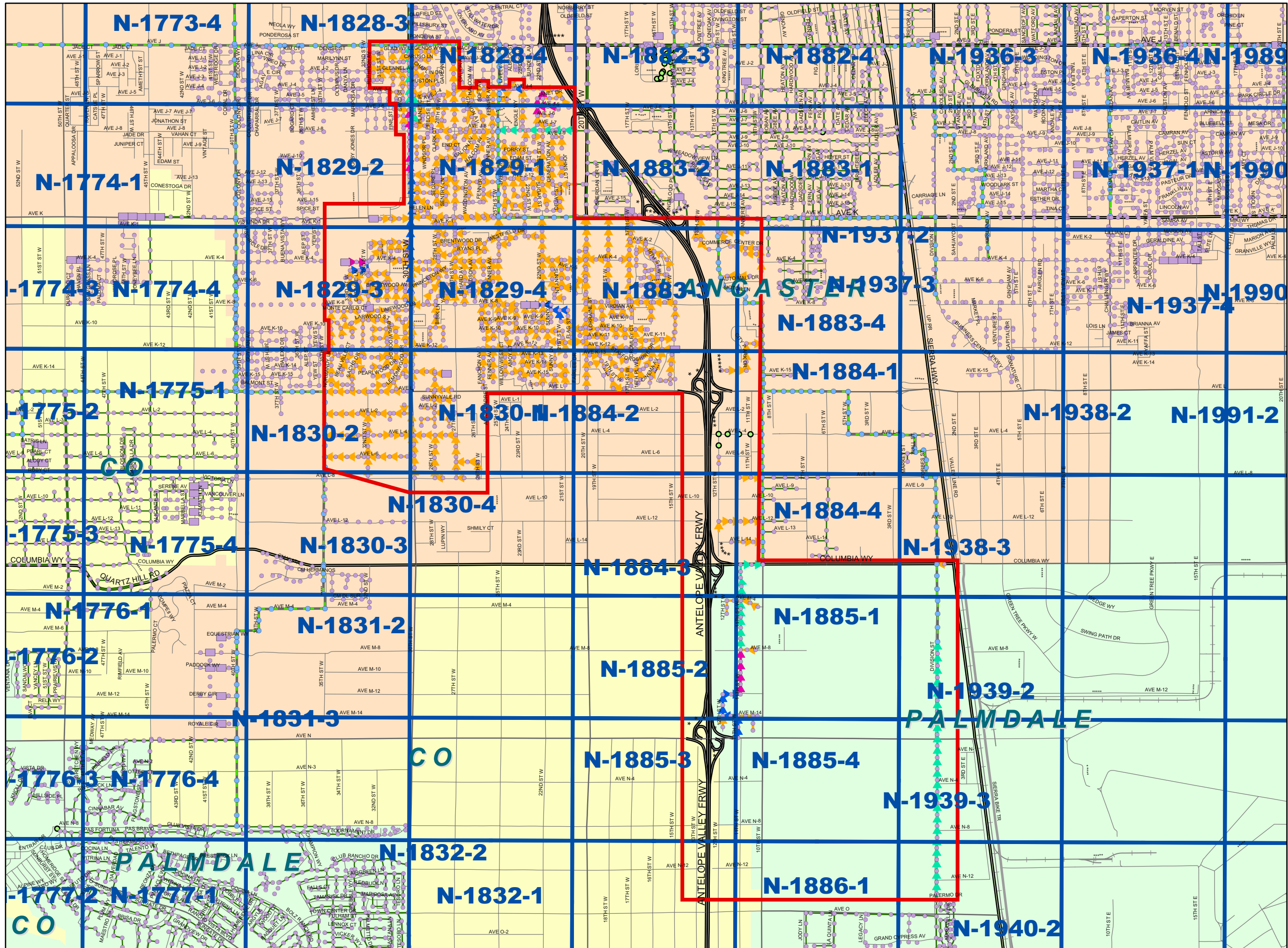
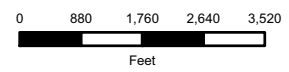
DEFECT GRADE	PIPE LENGTH (FT)	PERCENT TOTAL INSPECTED PIPE LENGTH	NO. SEGMENTS
1: Excellent	17,630	96.2	60
2: Good	700	3.8	2
3: Fair	0	0	0
4: Poor	0	0	0
5: Immediate Attention	0	0	0
TOTAL	18,330	100	62

ENCLOSURE 1:

Project Overview Map

**CCTV PROJECT
LOCATION MAP
YOTV0708A**

Supervisorial
District 5
Lancaster & Palmdale



Legend

SMD Sanitary Sewers

- Other
- 8
- 10
- 12
- 15
- 18

SMD Manholes

- Other

TYPE

- Standard
- Siphon
- Trap
- Shallow
- Drop
- SMD Pump Stations
- SMD Treatment Plants

Maintained by Others:

- Trunk MH
- Non SMD Maintained MH
- Trunk Sewers
- Non SMD Sanitary Sewers
- SMD Operations Maps
- CCTV Project Area

This map is intended only for internal operations of the Los Angeles County Sewer Maintenance Districts. Los Angeles County expressly disclaims any liability for any inaccuracies which may be present in this map. Data contained in this map is produced in whole or part from the Thomas Bros. Maps® digital database. This map is copyrighted, and reproduced with permission granted, by Thomas Bros. Maps®. All rights reserved.

AUGUST 2, 2007

ENCLOSURE 2:

- Quick Maintenance Rating Report
Priority List
- Quick Maintenance Rating Map

ENCLOSURE 2
QUICK MAINTENANCE RATING REPORT PRIORITY LIST
CITY OF PALMDALE (Y0TV0708A)
as of 10/12/07

Item No.	QMR	Start MH	End MH	Street	Observation	Corrective Action Taken
1	5100	1939-0003	1939-0002	DIVISION ST	Obstacle rocks	Hydrojet (Cleaned 8/27/08)

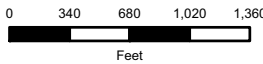
ENCLOSURE 2

CCTV PROJECT

YOTV0708A

Supervisorial District 5
Lancaster & Palmdale

QUICK MAINTENANCE RATING (QMR)

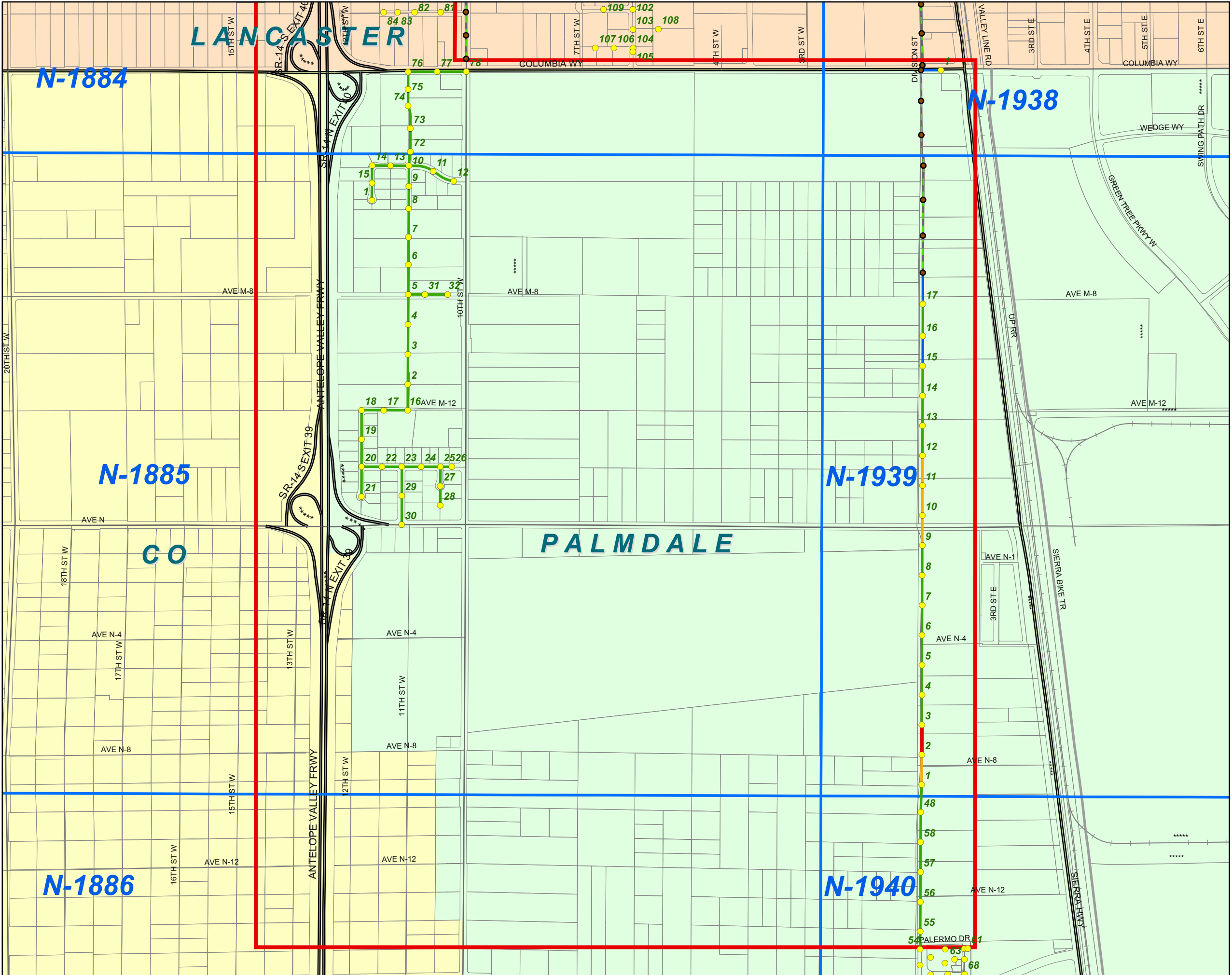


Legend

- Trunk Manhole
- Trunk Sewers
- Manhole
- Quick Maintenance Rating**
- 1: EXCELLENT
- 2: GOOD
- 3: FAIR
- 5: IMMEDIATE ATTENTION
- SMD Operations Maps
- CCTV Project Area

This map is intended only for internal operations of the Los Angeles County Sewer Maintenance Districts. Los Angeles County expressly disclaims any liability for any inaccuracies which may be present in this map. Data contained in this map is produced in whole or part from the Thomas Bros. Maps® digital database. This map is copyrighted, and reproduced with permission granted, by Thomas Bros. Maps®. All rights reserved.

NOVEMBER 28, 2007



ENCLOSURE 3:

Quick Structural Rating Map

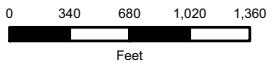
ENCLOSURE 3

CCTV PROJECT

YOTV0708A

Supervisorial
District 5
Lancaster & Palmdale

QUICK STRUCTURAL RATING (QSR)



Legend

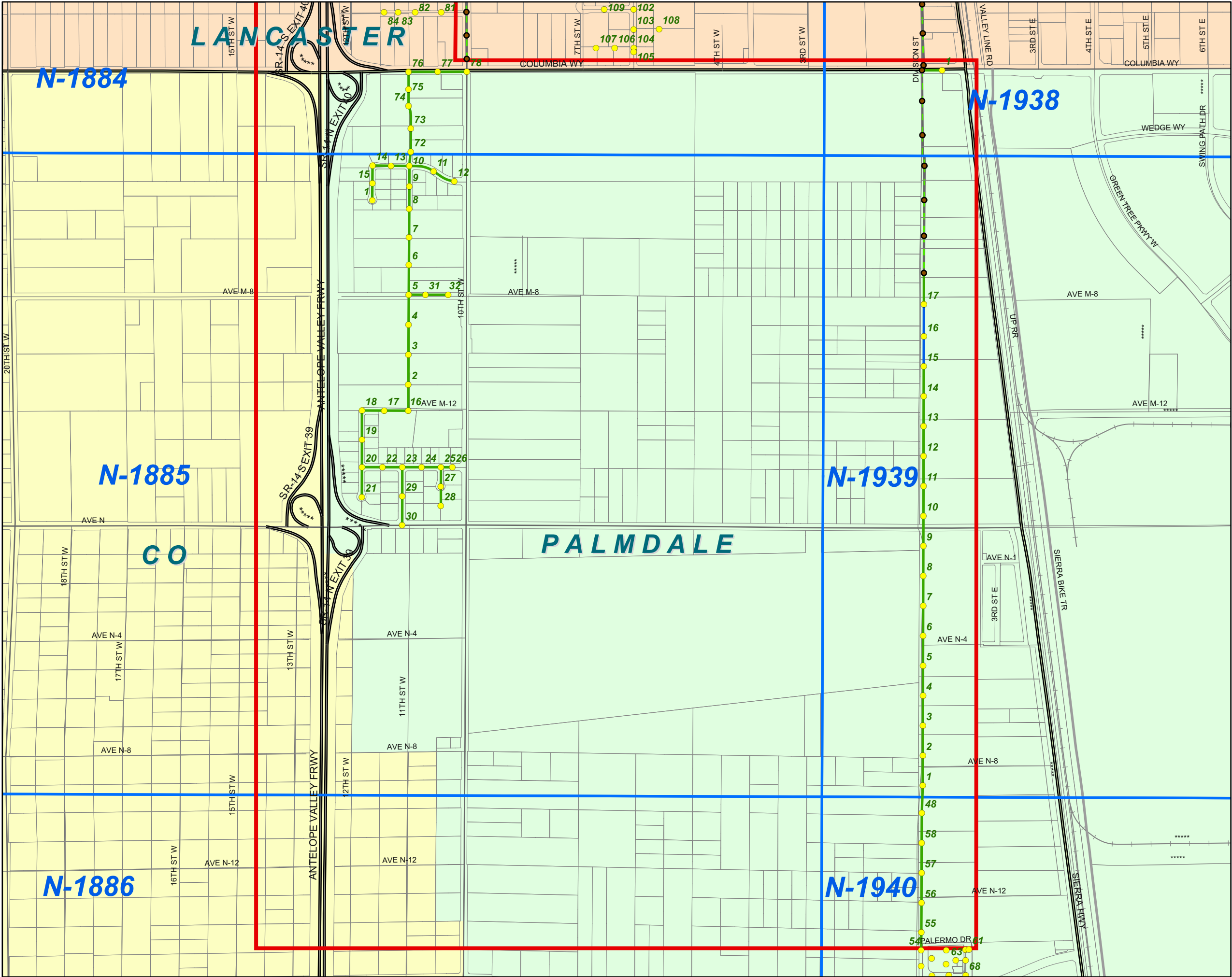
- Trunk Manhole
- Trunk Sewers
- Manhole

Quick Structural Rating

- 1: EXCELLENT
- 2: GOOD
- SMD Operations Maps
- CCTV Project Area

This map is intended only for internal operations of the Los Angeles County Sewer Maintenance Districts. Los Angeles County expressly disclaims any liability for any inaccuracies which may be present in this map. Data contained in this map is produced in whole or part from the Thomas Bros. Maps® digital database. This map is copyrighted, and reproduced with permission granted, by Thomas Bros. Maps®. All rights reserved.

NOVEMBER 28, 2007



ENCLOSURE 4:

Sample Inspection Report



WinCan America, Inc.
 1730 Montano Road NE, Suite E
 Albuquerque, NM 87107
 Tel: (505) 341.0109, Fax: (505) 341.0133

Inspection report

Date: 10/08/2007	P.O.#: Y0TV0708A	Weather: Dry	Surveyed By: Anthony Hernandez	section number: 244	PSR: 40481
Total Pipe Length: 350.00	Survey Customer: LACDPW	System Owner: Palmdale	Clean Date: 10/03/2007	Pre-Cleaned: Jetting	Map Grid #:

Street: DIVISION ST	Flow Control: Not Controlled	Start MH: 1939-0003
City: Palmdale	Year Renewed:	End MH: 1939-0002
Location Code: Easement/Right of Way	Tape/Media #: A315-011	Total length surveyed: 347.4 ft

Purpose: Maintenance Related	Dia/Height: Circular 15"
Use: Sanitary	Material: Vitrified Clay Pipe Pipe Joint length:
Drain. Area: 1939	Lining:
	Category:

Comment:
 Location details:

1:850	position	code	observation	MPEG	photo	grade
	0.00	AMH	Manhole, within 8 inch: NO, Remarks: 1939-0002	00:00:35	2460	
	6.00	MWL	Water Level, 15 %, within 8 inch: NO	00:02:40	2461	
	6.00	MWM	Water Mark, 20 %, within 8 inch: NO	00:03:04	2462	
	229.70	OBZ	Obstacle Other, from 3 to 9 o'clock, 40 %, within 8 inch: NO, Remarks: DEBRIS	00:09:35	2463	M 5
	347.40	AMH	Manhole, within 8 inch: NO, Remarks: 1939-0002	00:12:53	2464	

QSR	QMR	SPR	MPR	OPR	SPRI	MPRI	OPRI
0000	5100	0	5	5	0	5	5



Inspection photos

City: Palmdale	Street: DIVISION ST	Date: 10/08/2007	section number: 244	PSR: 40481
--------------------------	-------------------------------	----------------------------	-------------------------------	----------------------



Photo: 2460, Tape/Media No.: A315-011, 00:00:35
 0FT, Manhole, within 8 inch: NO, Remarks: 1939-0002

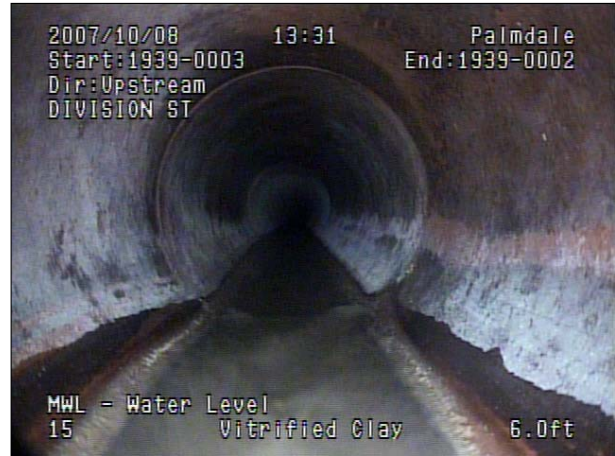


Photo: 2461, Tape/Media No.: A315-011, 00:02:40
 6FT, Water Level, 15 %, within 8 inch: NO



Photo: 2462, Tape/Media No.: A315-011, 00:03:04
 6FT, Water Mark, 20 %, within 8 inch: NO



Photo: 2463, Tape/Media No.: A315-011, 00:09:35
 229.7FT, Obstacle Other, from 3 to 9 o'clock, 40 %, within 8 inch: NO, Remarks: DEBRIS



WinCan America, Inc.
1730 Montano Road NE, Suite E
Albuquerque, NM 87107
Tel: (505) 341.0109, Fax: (505) 341.0133

Inspection photos

City: Palmdale	Street: DIVISION ST	Date: 10/08/2007	section number: 244	PSR: 40481
--------------------------	-------------------------------	----------------------------	-------------------------------	----------------------



Photo: 2464, Tape/Media No.: A315-011, 00:12:53
347.4FT, Manhole, within 8 inch: NO, Remarks: 1939-0002

ENCLOSURE 5:

CCTV Sewer Inspection Project Schedule

Palmdale**CCTV PROJECT SCHEDULE**

FISCAL YEAR	YARD	SUP DIST	PROJECT NAME	LENGTH (FT)*
2007-2008	N	5	Y0TV0708A	18,330
2007-2008	N	5	Y0TV0708D	306,486
2008-2009	N	5	5_12	267,675
2010-2011 **	N	5	5_11	284,725
2013-2014 **	N	5	5_20	299,768
2014-2015 **	N	5	5_21	316,163
2015-2016 **	N	5	5_10	138,900
2015-2016 **	N	5	5_18	308,217
TOTAL (FT)				1,940,264
TOTAL (MILES)				367

* Approximate length as of July 2005, actual project length may vary.

** Subject to being a part of the CSMD.